

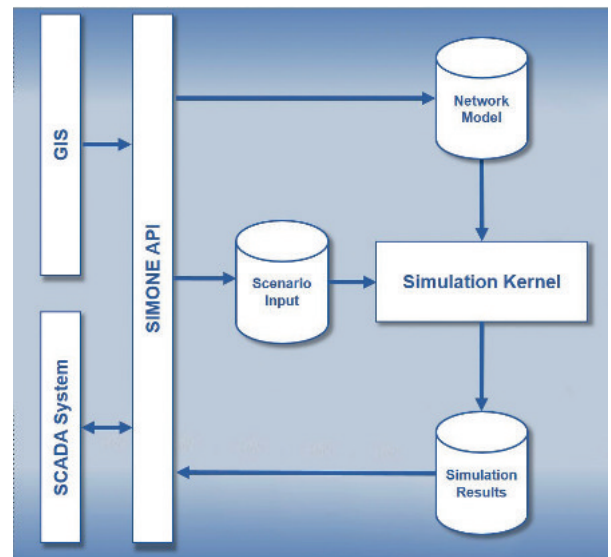


The **SIMONE Application Programming Interface** was originally developed to ease data interfacing with SCADA systems. SIMONE API has now become a universal, versatile tool for any interfacing and automating task, integrating and embedding simulation functionality with other systems and in any workflow. It can be used with virtually any programming language, like using it from Excel with Visual Basic, directly from the SIMONE desktop with JavaScript, or with C++ and C# or JAVA.

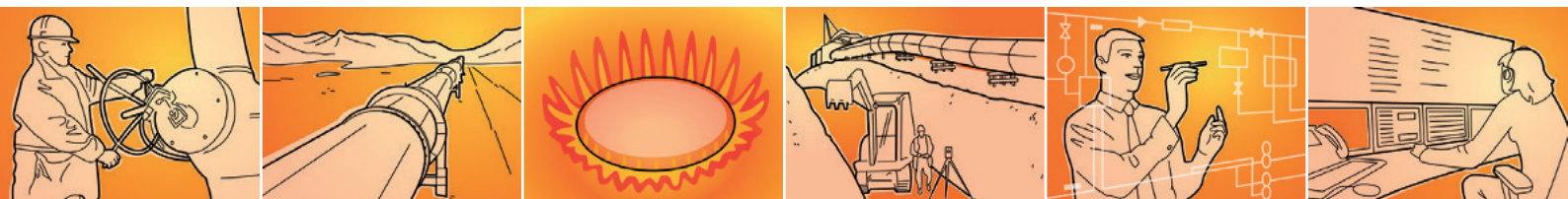
## SIMONE API Application Programming Interface

This unique Application Programming Interface allows transferring any simulation input and output data to and from the simulator. Extended API functions enable integrating SIMONE with host applications, e.g. SCADA or GIS systems, or custom applications. They allow e.g. triggering the execution of the simulator, creating and handling networks, controlling real-time simulation, and archiving data.

Almost anything possible at the user interface can be accomplished with the API programmatically. The completeness of functionality makes it easy to customize data import and export and automation of any particular workflow. The network edit extension allows to create and manipulate network models, like import from GIS or from other sources.



**SIMONE**  
SOFTWARE  
Simulation and Optimization on Networks



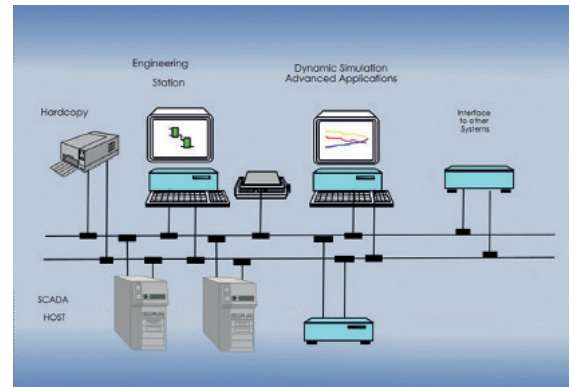
## Fact Sheet

### SIMONE Application Programming Interface

- accessible from virtually any programming language
- supports complete functionality of SIMONE as at GUI
- import/export of data
- triggering execution
- handling of network models

### SIMONE

- tracks gas compositions, gas parameters, and pipeline inspection gauges
- calculates temperature, line pack, flow speed, and more
- single kernel source code for Windows, Unix and Linux systems
- client-server technology and multi-user support
- versatile Application Programming Interface, known as the SIMONE API, for integration with SCADA, GIS, data-bases, and customer applications



## SIMONE Users



## Contact and Product Support



### LIWACOM Informationstechnik GmbH

Berliner Platz 6-8  
45127 Essen, Germany

Phone +49 201 170 38-0

Email [postmaster@liwacom.de](mailto:postmaster@liwacom.de)

[www.liwacom.de](http://www.liwacom.de)